

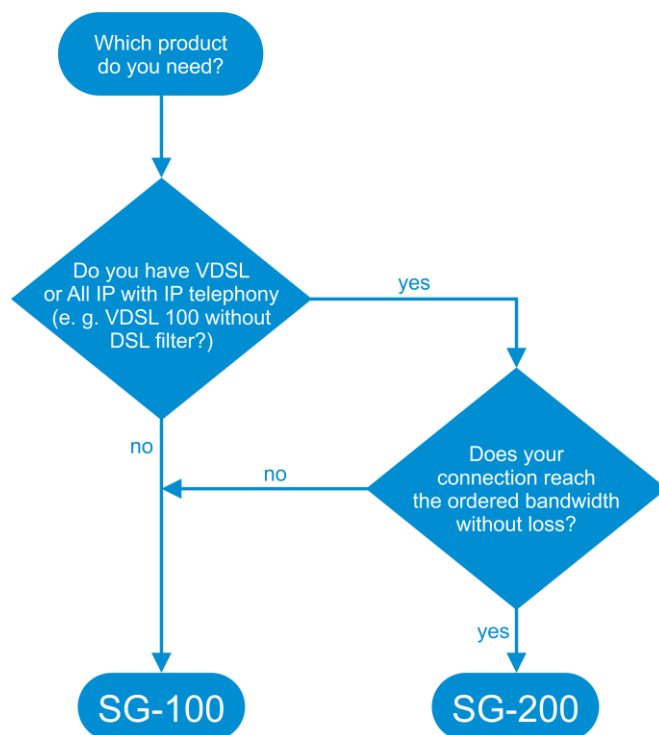
SG-100/SG-200



Overvoltage protection modules for effective protection against power surges for All-IP and traditional telecommunications connections.

- Perfectly secured telecommunications infrastructure
- Plug and play – commissioning made as quick and easy as possible
- Full performance – bandwidths guaranteed
- No productivity hits when Internet access fails

Use the modules in the SG series to can protect your router or a remote end device on your ITC infrastructure against power surges from the communications network. The SG-100 is the best choice for use on ADSL connections with splitters, ISDN or remote exchange line connections, remote analogue extensions, remote U_{P0} extensions or analogue door terminals. The SG-200 is designed for use on **All-IP** connections such as VDSL or ADSL without splitters.



Features Overview

Features

SG-100

Suitable for use on an:

- ADSL connection with splitter
- ISDN exchange line connection
- analogue exchange line connection
- remote analogue or U_{P0} extension or analogue door terminal
- ADSL and VDSL connections with bandwidth reduced, but above minimum guaranteed access line speed.

SG-200

Suitable for use on **All-IP** connections:

- VDSL connections
- Suitable for VDSL 100
- ADSL connections without splitters

Technical Data

General

- **Usable in compliance with country-specific requirements:** across Europe
- **Ambient temperature in operation:** -5 to +40 °C
- **Ambient temperature in storage:** -40 to +70 °C
- **Relative humidity in operation:** 5 % to 95 %, non-condensing
- **Mounting type:** wall mounting
- **Protection class:** IP20
- **Casing:** plastic (fire-proof), black
- **Dimensions:** 142 mm x 81 mm x 27 mm
- **Weight:** 106 g (SG-100), 111 g (SG-200)
- **Safety:** CE

SG-100

- **Surge arrester class:** Type 2P1
- **Rated voltage (UN):** 70 V AC/100 V DC
- **Highest continuous voltage (UC):** 85 V AC/120 V DC
- **Rated current at 45 °C (IL):** <= 200 mA
- **Total C2 rated discharge surge current 5 kV (8/20 µs) (In):** 5 kA
- **C2 rated discharge surge current 5 kV (8/20 µs) per core (In):**
 - <= 2.5 kA (operation with wire terminal)
 - <= 2 kA (operation via RJ45 socket)
- **Protective level, core-core at C2 (UP):** <= 130 V
- **Protective level, core-PG at C2 (UP):** <= 230 V
- **Serial impedance per core (0 to 30 MHz):** 2.4 Ω +-20%
- **Cut-off frequency, core-core (100 Ω) (fG):** 0 to 100 MHz
- **Capacity, core-core (C):** <= 10 pF
- **Capacity, core-PG (C):** <= 10 pF
- **Pulse reset time:** <= 160 ms
- **Overload failure mode:** Mode 3 (disconnect line)

SG-200

- **Surge arrester class:** Type 2P1
- **Rated voltage (UN):** 20 V AC
- **Highest continuous voltage (UC):** 28 V AC / -- DC
- **Rated current at 45 °C (IL):** <= 60 mA
- **Total C2 rated discharge surge current 5 kV (8/20 µs) (In):** 5 kA
- **C2 rated discharge surge current 5 kV (8/20 µs) per core (In):**
 - <= 2.5 kA (operation with wire terminal)
 - <= 2 kA (operation via RJ45 socket)
- **Protective level, core-core at C2 (UP):** <= 45 V
- **Protective level, core-PG at C2 (UP):** <= 230 V
- **Serial impedance per core (0 to 30 MHz):** 3.8 Ohm resistive +-20% + 100 nF capacitive
- **Cut-off frequency, core-core (100 Ω) (fG):** 35 kHz to 80 MHz
- **Capacity, core-core (C):** <= 15 pF
- **Capacity, core-PG (C):** <= 10 pF
- **Pulse reset time:** <= 160 ms
- **Overload failure mode:** Mode 3 (disconnect line)

Scope of Delivery

- SG-100 or SG-200
- RJ45 connecting cable
- Mounting hardware
- Installation Guidelines

Ordering Information

- **Designation:** SG-100
- **Item number:** 90077
- **EAN code:** 4019377900772

- **Designation:** SG-200
- **Item number:** 90078
- **EAN code:** 4019377900789