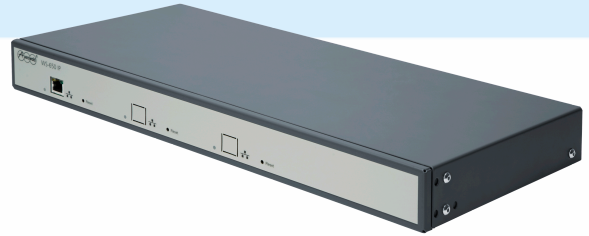


# COMfortel® WS-650 IP



Professional, highly extendible IP DECT multi-cell server with 32 VoIP channels to a SIP-based ICT system, for 30 handsets

- Delivers high-quality and secure communication throughout the company
- Optimal availability of employees due to increased site mobility
- Flexible wireless coverage with up to 1024 radio cells (COMfortel® WS-Base)
- Registration of 30 handsets, software upgrade to support more than 4000 handsets
- 32 simultaneous voice channels between IP-DECT server and the PBX, hardware upgrade to 1024 voice channels

## Your advantages in detail

The COMfortel WS-650 IP is an IP DECT server for all company sizes. The IP DECT multi-cell system ensures the permanent availability of employees throughout the company. Calls can be made even while moving around company premises. The connection is automatically – and of course seamlessly – transferred to the next base.

Its professional features, such as access to address books provided centrally via LDAP or in the cloud, or

its extreme scalability with up to 1,024 base stations and 4,096 mobile users, makes this system a good investment for the future.

The entire IP DECT wireless system comprises several components: the COMfortel WS-650 IP server, up to 1,024 COMfortel WS-Base DECT bases, if necessary, a COMfortel WS-R2/R4 repeater to extend the range of the bases, and our COMfortel M-100/M-210/M-310 DECT handsets.

# Features at a glance

## PHONE FEATURES

- Registration of 30 wireless users, possible to extend to 4,096 wireless users
- 32 simultaneous VoIP channels to the ICT system, hardware extension for up to 1,024 voice channels available (in steps of 32)
- Flexible extension of the radio coverage with up to 1,024 base stations
- Seamless Handover between the base stations
- High-quality and secure voice communication
- Web UI for administration and maintenance of the entire infrastructure
- Support for provisioning of configuration and user data through HTTP/HTTPS/TFTP for the entire installation incl. handsets
- Central administration of over-the-air handset firmware upgrades (COMfortel M-100, M-210, M-310)
- Prioritisation of voice traffic (DiffServ)
- Tone dialling during a call (according to RFC 2833)
- VLAN support based on IEEE 802.1q/p
- VoIP codecs G.711 (µ-Law/A-Law) and G.726

## COMPATIBLE PRODUCTS

- 90337 / COMfortel® M-100
- 90160 / COMfortel® M-210
- 90344 / COMfortel® M-310
- 90145 / COMfortel® WS-Base
- 90152 / COMfortel® WS-R2
- 90146 / COMfortel® WS-R4
- 90118 / COMpact 4000

- 90335 / COMpact 5200R
- 90670 / COMmander® 6000
- 90671 / COMmander® 6000R
- 90672 / COMmander® 6000RX

## TECHNICAL SPECIFICATIONS

- System connection: Ethernet 10/100 Base-T
- Maximum number of handsets: 30 | 4,096<sup>1</sup>
- Maximum number of bases COMfortel WS-Base: 1,024<sup>1</sup>
- Maximum number of repeater COMfortel WS-R2/R4: 3 per COMfortel WS-Base
- Module slots: 2 for Media Resources
- VoIP protocol: SIP, RFC 3261 compliant
- VoIP codecs: G.711, G.726 | G.711, G.726, G.729<sup>1</sup>
- Maximum number VoIP channels: 32 | 1,024<sup>1</sup>
- Operating voltage: 110 V – 240 V AC, 50/60 Hz
- Power consumption: 2.8 W min. | 6.5 W max.
- Housing: closed 19" rack-mounting type casing, 1 HU
- Colour: gray
- Dimensions (w x h x d): 440 mm x 199 mm x 44 mm
- Weight (w/o modules): approx. 2,350 g
- Compliance: CE

## DELIVERY

- COMfortel WS-650 IP
- Network cable
- Mounting bracket and screws for 19" mounting
- Setup Guide (German/English)

<sup>1</sup> Depending on the setup of the COMfortel WS-650 IP and the PBX system.

### ORDERING INFORMATION

Designation: COMfortel® WS-650 IP

Article number: 90150

EAN Code: 4019377901502